


INTERCON

ESD-95 ESCORT WINCH

ENGINEERED FOR TOMORROW
AVAILABLE TODAY



RENDERING PROVIDED COURTESY OF  **Glosten**

INTERCON.COM

The ESD-95 Escort Winch is designed from the deck up to optimize energy usage on today's hybrid-electric and electric tugs. Continuous dynamic braking is provided by high horsepower electric motors, avoiding energy losses from transmissions and water brakes, while providing superb response times while in operation. Direct DC BUS integration allows regenerated power to flow directly to other onboard systems. Advanced safety features, such as automatic heel compensation keep crews safe in dynamic operating conditions. Advanced controls with haptic feedback allow captains to keep their eyes on the tow at all times.



WINCH SPECIFICATIONS



MAX DRUM CAPACITY:
 • 1,395' OF 10.0" CIRCUMFERENCE SYNTHETIC LINE



RATED PERFORMANCE:
 • DYNAMIC BRAKE CAPACITY OF 211,000 LBS ON LAYER 2
 • MAX LINE SPEED OF 498 FT/MIN ON LAYER 8
 • MAX LINE PULL OF 282,000 LBS @ 74 FT/MIN ON LAYER 0
 • MANUAL BAND BRAKE CAPACITY OF 678,000 LBS



MAX FREEWHEEL SPEED:
 • 553 FT/MIN



ELECTRIC MOTOR & DRIVE:
 • 500 KW (2X 250 KW) AC MOTORS WITH DC OR AC FED VARIABLE FREQUENCY DRIVES
 • POWER CONSUMPTION OF APPROXIMATELY 75 KW @ 385 AMPS DURING MAXIMUM DYNAMIC BRAKING
 • MAXIMUM POWER REGENERATION OF APPROXIMATELY 475 KW



WINCH CONTROL:
 • WHEELHOUSE CONTROL
 • TACTILE CONTROL WITH HAPTIC FEEDBACK
 • HMI DISPLAY FOR ADVANCED MONITORING

• LOCAL CONTROL
 • E-STOP
 • FREEWHEEL



POWER REQUIREMENTS:
 • 460 VAC | 3 PHASE | 60 HZ
 • 700 VDC



WEIGHT:
 • WITHOUT LEVELWIND: 30,500 LBS
 • WITH LEVELWIND: 37,700 LBS

WINCH CONTROL FEATURES

UTILIZING ABB SMART WINCH TECHNOLOGY

OPERATIONAL MODES



ASSIST MODE:
 CONSTANT TENSION

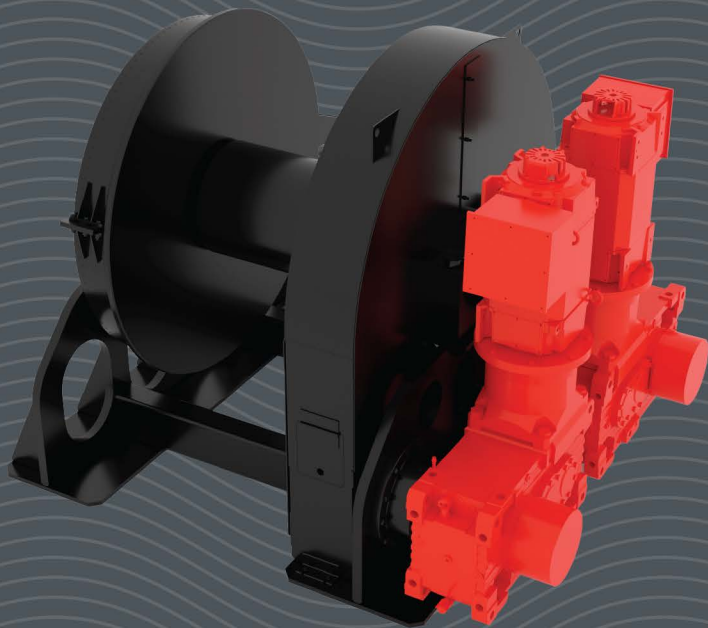


ESCORT MODE:
 AUTO PAYOUT & HAUL-IN

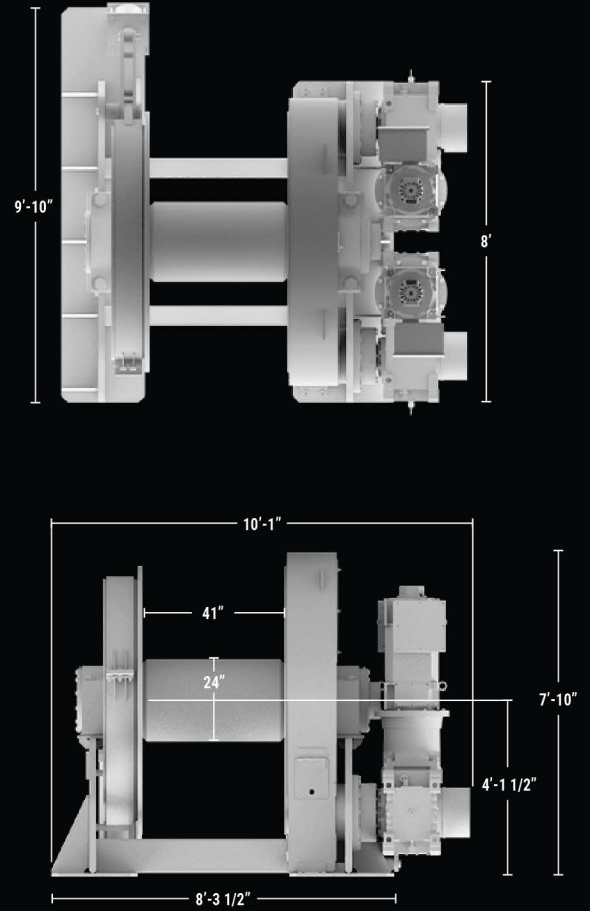


MANUAL MODE:
 CONVENTIONAL WINCH WITH HAWSER TENSION & SPEED READOUT



FEATURES	MODES		
	ASSIST	ESCORT	MANUAL
PRECISION SPEED (REDUCED SPEED MODE)	●	●	●
LINE LENGTH AND SPEED MEASUREMENT	●	●	●
MIN WRAP LIMIT & BYPASS	●	●	●
MIN PAYOUT LENGTH LIMIT & BYPASS	●	●	●
TUG HEEL ALERT	●	●	●
FEATHERING	●	●	●
OPERATOR OVERRIDE	●	●	
LINE TENSION MEASUREMENT	●	●	
LINE LENGTH, SPEED & TENSION CONTROL	●	●	
HAWSER TENSION LIMIT CONTROL		●	●
PRESET PAYOUT			●
RESET COUNT & PAYOUT CALIBRATE			●
SLACK ROPE CONTROL		●	
TUG AUTO HEEL COMPENSATION		●	



DIMENSIONAL ENVELOPE



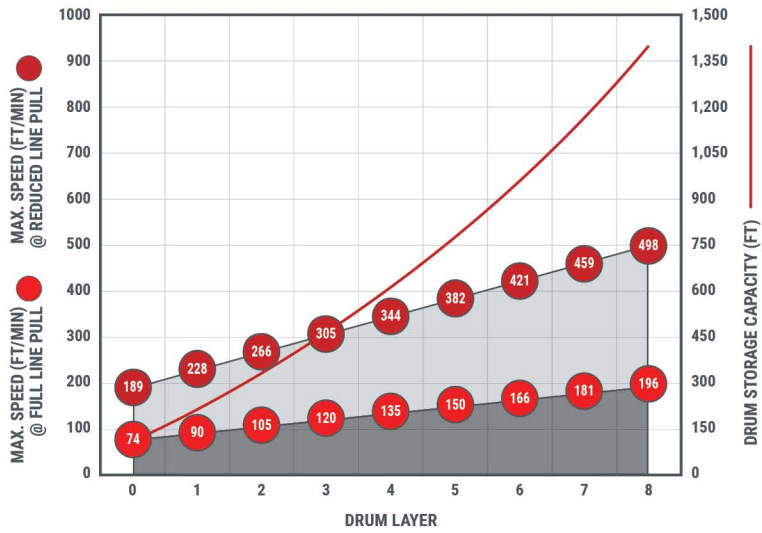
WINCH OPERATIONAL TRENDING

-  HAWSER PEAK LOAD TRACKING
-  VESSEL HEEL COMPENSATION TRACKING

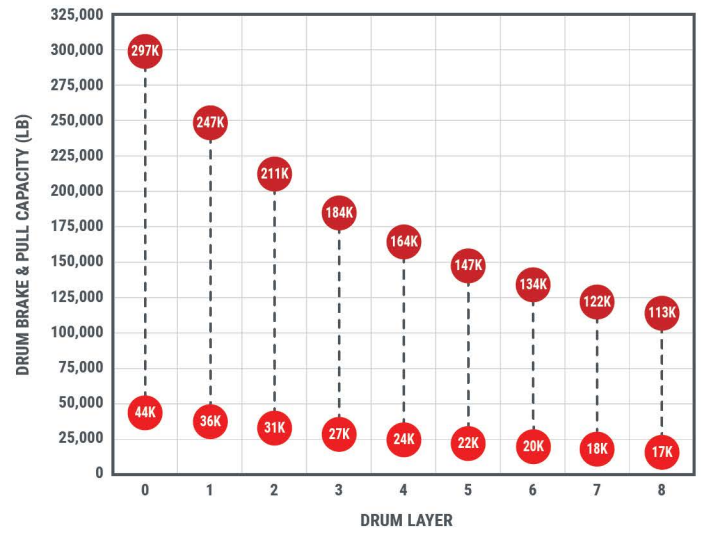
WINCH CONDITION MONITORING

-  MOTOR TEMPERATURE
-  BRAKE LINING WEAR
-  BRAKE SLIP DETECTION
-  DRUM BEARING TEMPERATURE
-  GEARBOX TEMPERATURE
-  GEARBOX LUBE PRESSURE
-  GEARBOX DIRTY FILTER INDICATION
-  GEARBOX OPERATING HOURS
-  AMBIENT TEMPERATURE

LINE SPEED & STORAGE CAPACITY



DYNAMIC BRAKE



INTERCON ESD-95 ESCORT WINCH ON THE BOW OF A GLOSTEN SA-100 SHIP ASSIST TUG



info@intercon.com
+1 (816) 741-0700

